



## AMGEVITA® pre-filled syringe for single use

### Instructions for subcutaneous self-injection

**With the AMGEVITA® pre-filled syringe, you can self-inject AMGEVITA® at home.**

#### Important:

Always use this medicinal product exactly as your doctor or healthcare professional has instructed you to. Ask your doctor or pharmacist if you are not sure.

#### Please note the following before use:

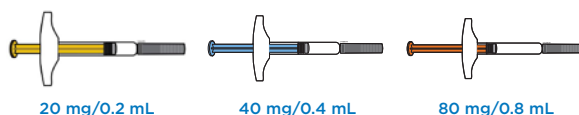
- ✓ Perform the injection only if your doctor or the practice staff have already shown you how to carry out the self-injection.
- ✓ Store AMGEVITA® pre-filled syringes in the refrigerator at +2 to +8 °C (36 to 46 °F). Do not freeze.
- ✓ Do not use an AMGEVITA® pre-filled syringe if it has fallen onto a hard surface. Parts of the AMGEVITA® pre-filled syringe may be damaged, even if you cannot detect any damage.
- ✓ Wash your hands thoroughly with soap and water.

#### Have the following ready:

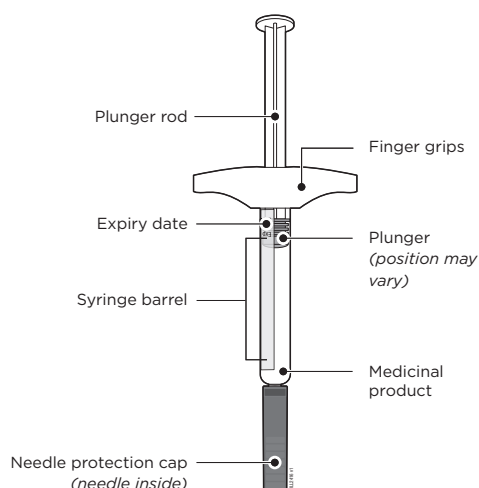
- |                            |                        |                            |
|----------------------------|------------------------|----------------------------|
| ✓ A new pre-filled syringe | ✓ Alcohol pads         | ✓ Plaster                  |
|                            | ✓ Cotton ball or gauze | ✓ Puncture-proof container |

## Important injection steps

### Step 1: Important information you need to know before injecting AMGEVITA®



- AMGEVITA® is available in three dosages: 20 mg/0.2 mL, 40 mg/0.4 mL, 80 mg/0.8 mL. Check your prescription to make sure you have received the correct dosage.
- The pre-filled syringes differ in colour and appearance for the individual dosages, and the amount of medicinal product in the pre-filled syringe is also specific for each dosage.



## Step 2: Take an AMGEVITA® pre-filled syringe out of the packaging.

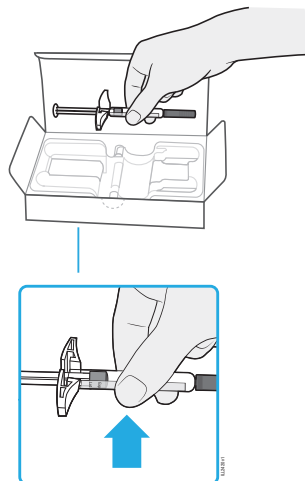
Lift the pre-filled syringe out of the box 30 minutes before injecting to allow it to reach room temperature. Grip the pre-filled syringe by the syringe barrel. Put all unused pre-filled syringes back into the refrigerator.

### Never:

- touch the finger grips, the plunger rod, or the needle protection cap.
- remove the needle protection cap before you are ready to inject.
- put the pre-filled syringe back into the refrigerator if it has already reached room temperature.
- try to warm the pre-filled syringe by using a heat source such as hot water or a microwave, or by direct sunlight.
- expose the pre-filled syringe to direct sunlight.
- shake the pre-filled syringe.

### Important:

Always hold the pre-filled syringe by the syringe barrel.



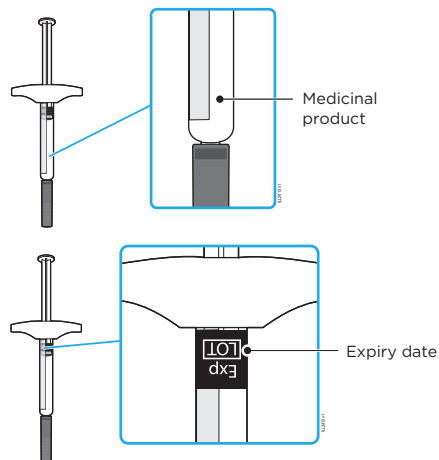
## Step 3: Check the AMGEVITA® pre-filled syringe.

Make sure that the medicinal product in the syringe barrel is clear and colourless to slightly yellowish. Check the expiry date. Always hold the syringe by the syringe barrel.

### Never use the pre-filled syringe if

- the medicinal product is cloudy or discoloured, or contains flakes or particles.
- if it has cracks or broken parts.
- the needle protection cap is missing or not firmly attached.
- the current date is past the expiry date.

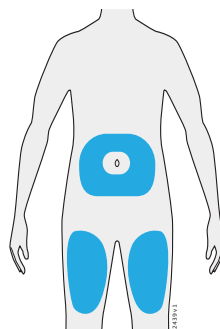
In each of these cases, use a new pre-filled syringe.



## Step 4: Prepare and clean the injection site.

Select your injection site:

- **Abdomen** (with the exception of an area of about 5 centimetres / 2 inches around the navel) or
- **thigh**



Wash your hands thoroughly with soap and water. Clean the injection site with an alcohol wipe and let your skin air-dry.

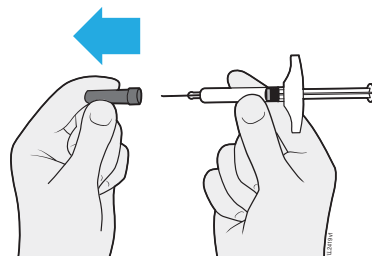
**Important:**

- Avoid touching the injection site again before injecting.
- Select a new site for each injection.
- Avoid areas with scars or stretch marks, or where the skin is sensitive, reddened, hardened, or bruised.
- If you suffer from psoriasis, you should avoid injecting directly into raised, thick, reddened or scaly areas of skin or wounds.

---

**Step 5: Pull the needle protection cap straight off.**

Once you are ready to inject, carefully pull off the needle protection cap while holding the pre-filled syringe by the syringe barrel. It is normal if you see a drop of the medicinal product at the tip of the needle.



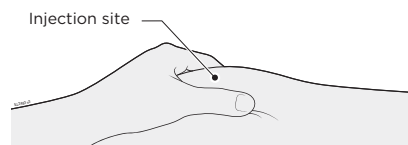
**Never**

- turn or bend the needle protection cap.
- put the needle protection cap back onto the pre-filled syringe.
- deposit the pre-filled syringe on a surface after removing the needle protection cap.
- remove the needle protection cap from the pre-filled syringe before you are ready to inject.
- try to press air bubbles out of the pre-filled syringe. It is OK if air bubbles are visible.

---

**Step 6: Compress the skin at the injection site before injecting.**

- Compress the skin between your thumb and forefinger to form a raised area for the injection.
- If possible, the raised area should be about 5 cm / 2 inches wide.



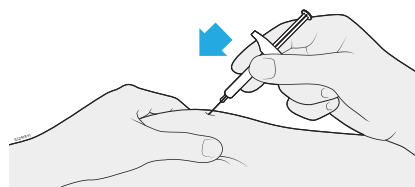
---

**Step 7: Insert the needle into the compressed skin.**

Insert the needle either straight or at an angle of 45° into the compressed skin.

**Important:**

**Do not** place your finger on the plunger rod while inserting the needle, as this might cause loss of medicinal product.



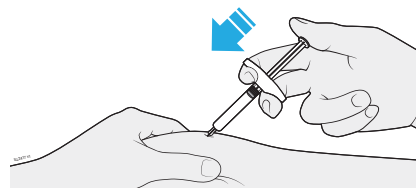
### Step 8: Slowly press the plunger rod down.

Slowly press the plunger rod down until it reaches the bottom of the pre-filled syringe.

#### Important:

Leave the skin compressed until the injection is complete.

**Do not** pull back the plunger at any time. **Do not** remove the needle until the entire dose has been delivered.

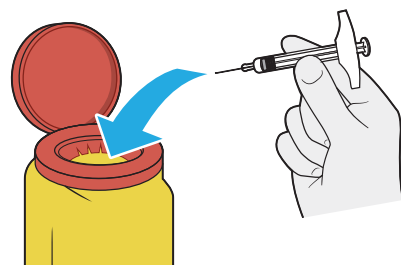


### Step 9: After the injection.

#### Important:

Never put the needle protection cap back on.

Immediately after use, dispose of the used pre-filled syringe and the needle protection cap into a puncture-proof container. Do **not** dispose of the used pre-filled syringe and the puncture-resistant container into household waste; do **not** recycle them either. Talk to your doctor or pharmacy staff about proper disposal.



#### Important:

**Do not** reuse the used pre-filled syringe, and **do not** use any medicinal product that remains in the used syringe. Always keep the puncture-proof container out of the reach of children.

### Step 10: Check the injection site.

**Do not** rub the injection site. If you notice any blood, press cotton wool or gauze onto the injection site. Use a plaster if necessary.

Please refer to the PIL for further information.