



## AMGEVITA® SureClick® pre-filled pen for single use

### Instructions for subcutaneous self-injection

**With the SureClick® pre-filled pen, you can administer the AMGEVITA® injection by yourself at home.**

#### Important:

Always use this medicinal product exactly as your doctor or healthcare professional has instructed you to. Ask your doctor or pharmacist if you are not sure.

#### Please note the following before use:

- ✓ Perform the injection only if your doctor or the practice staff have already shown you how to carry out the self-injection.
- ✓ Store the pre-filled pens in the refrigerator at +2 to +8 °C (36 to 46 °F). Do not freeze.
- ✓ Do not use a pre-filled pen if it has fallen onto a hard surface. Parts of the pre-filled pen may be damaged, even if you cannot detect any damage.
- ✓ Wash your hands thoroughly with soap and water.

#### Have the following ready:

- |                        |                        |                            |
|------------------------|------------------------|----------------------------|
| ✓ A new pre-filled pen | ✓ Alcohol pads         | ✓ Plaster                  |
|                        | ✓ Cotton ball or gauze | ✓ Puncture-proof container |

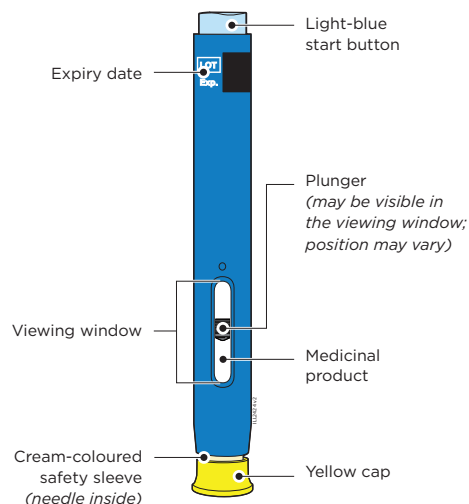
## Important injection steps

### Step 1: Take an AMGEVITA® pre-filled pen out of the packaging.

Lift the pre-filled pen carefully and directly upward out of the box 30 minutes before injecting to allow it to reach room temperature. Put the original packaging with the unused AMGEVITA® pens back into the refrigerator.

#### Never

- put the pre-filled pen back in the refrigerator when it has already reached room temperature.
- heat the pre-filled pen with hot water, in the microwave, or by direct sunlight.
- shake the pre-filled pen.
- remove the yellow cap from the pre-filled pen prematurely.



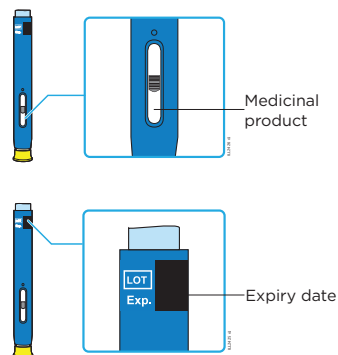
## Step 2: Check the AMGEVITA® pre-filled pen.

Make sure that the medicinal product in the viewing window is clear and colourless to slightly yellowish. Check the expiry date.

### Do not use the pre-filled pen if

- the medicinal product is cloudy or discoloured, or contains flakes.
- the pre-filled pen has cracks or broken parts.
- the pre-filled pen has fallen onto a hard surface.
- the yellow cap is missing or loose.
- the current date is past the expiry date printed on the label.

In each of these cases, use a new pre-filled pen.



## Step 3: Prepare and clean the injection site.

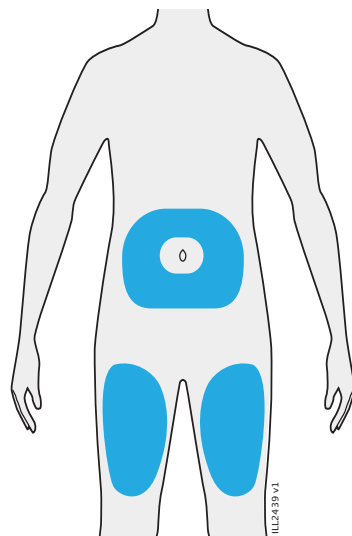
Select your injection site:

- **Abdomen** (with the exception of an area of about 5 centimetres / 2 inches around the navel) or
- **thigh**

Clean the injection site by wiping with an alcohol swab. As soon as the skin is dry, you are ready for the injection.

### Important:

- Avoid touching the injection site again before injecting.
- Make sure that you do not use exactly the same injection site as the time before.
- Do not select areas where the skin is sensitive, reddened, hardened, or bruised.
- Avoid injecting into areas with scars or stretch marks.
- If you suffer from psoriasis, avoid injecting directly into swollen, thick, reddened or scaly skin areas or lesions.

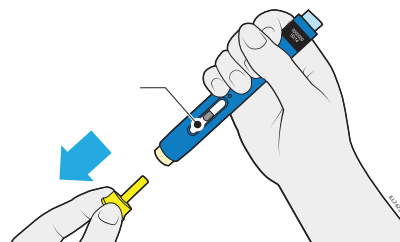


## Step 4: Pull the yellow cap straight off.

Remove the yellow cap only immediately (max. 5 minutes) before injecting, as the medicinal product might dry out. Hold the pre-filled pen so that you can see the viewing window. Pull the yellow cap straight off. You may need to apply some force. It is normal if you see a drop of medicinal product on the needle tip or the cream-coloured safety sleeve.

### Never

- turn, bend, or wiggle the yellow cap.
- insert your finger into the cream-coloured safety sleeve.

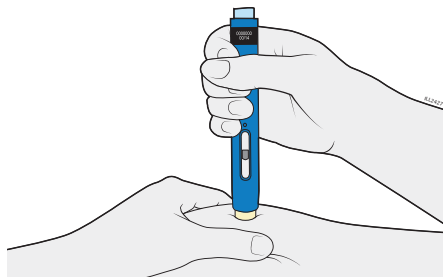


### Step 5: Create a firm surface for the injection and place the pre-filled pen.

Compress the skin to form a firm surface at the injection site.

Place the cream-coloured safety sleeve onto the skin.

Keep the skin compressed until the injection is complete. Make sure that the viewing window is visible. Make sure that you hold the auto-injector vertically (at a 90° angle) onto the injection site.



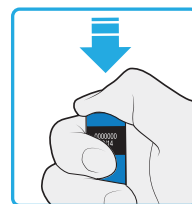
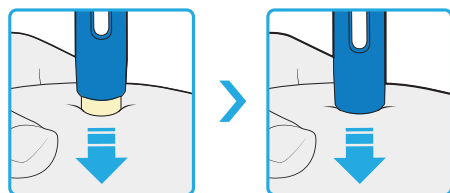
### Step 6: Hold the pre-filled pen firmly against the skin.

Press down firmly until the cream-coloured safety sleeve stops moving.

Keep pressed down, do not release.

The cream-coloured safety sleeve is pressed in and unlocks the light-blue start button.

- Continue to hold the pre-filled pen firmly against the skin and press the light-blue start button to start the injection.
  - You may hear or feel a click.
- The viewing window turns yellow, and you can now release the light-blue start button.



### Step 7: Continue to press the pre-filled pen against the skin.

When the viewing window is completely yellow, the injection is complete. It may take up to **10 seconds** for the injection to be completed.

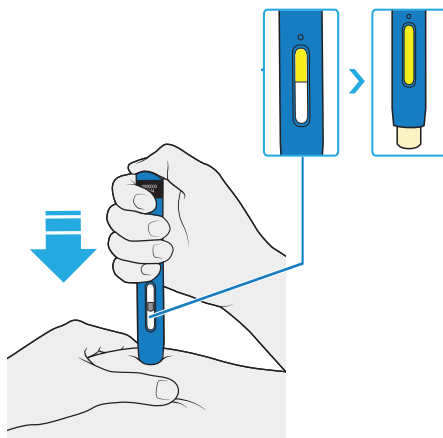
You may hear or feel a click.

Lift the pre-filled pen away from your skin.

The cream-coloured safety sleeve encloses the needle.

#### Important:

If you remove the pre-filled pen from the skin and the window has not turned yellow, or if it looks as if the medicinal product is still being injected, this means that you have not received a full dose. Call your doctor or healthcare professional immediately.



### Step 8: After the injection.

Immediately after use, dispose of the used pre-filled pen and the yellow cap into a puncture-proof container.

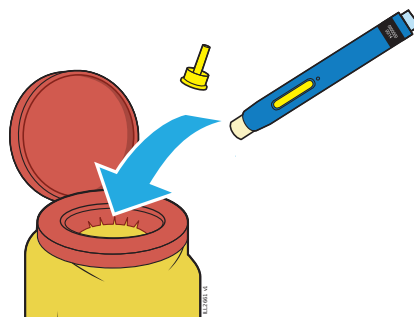
Do not dispose of the used pre-filled pen and the puncture-resistant container into household waste; do not recycle them either.

Talk to your doctor or pharmacist about proper disposal.

#### Important:

Do not reuse the used pre-filled pen, and do not touch the cream-coloured safety sleeve.

Always keep the puncture-proof container out of the reach of children.



### Step 9: Check the injection site.

If some blood leaks from the injection site, press on it for a few seconds with cotton wool or gauze. **Never** rub the injection site. Apply a plaster or a small bandage if necessary.

Please refer to the PIL for further information.