

Instructions for subcutaneous self-injection

AMGEVITA® disposable pre-filled syringe

The AMGEVITA® pre-filled syringe allows you to self-administer injections of AMGEVITA® from the comfort of your home.

Important:

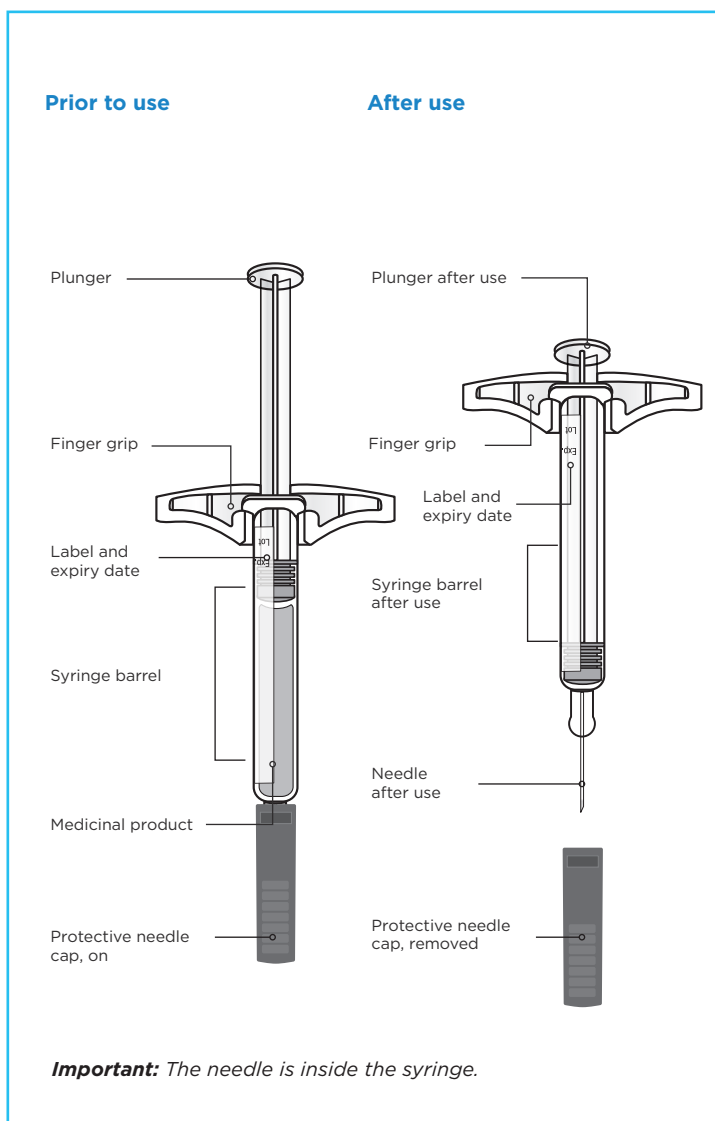
Always use this medicinal product exactly as your doctor or pharmacist has told you. Check with your doctor or pharmacist if you are not sure.

Prior to use, please note the following:

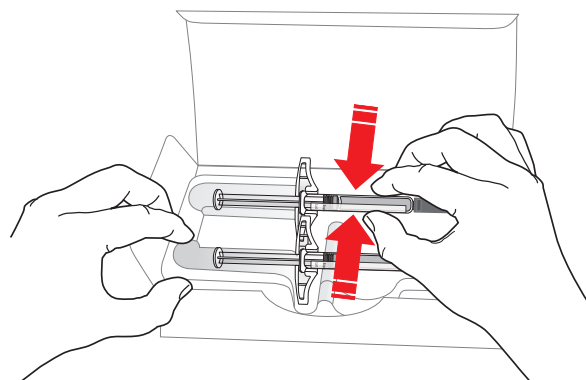
- ✓ Only administer the injection if your doctor or the practice team has shown you how to self-administer injections.
- ✓ Store the AMGEVITA® pre-filled syringes in the refrigerator at 2 to 8°C.
- ✓ Do not use an AMGEVITA® pre-filled syringe if it has fallen on a hard surface. Parts of the AMGEVITA® pre-filled syringe may be damaged even if you cannot see any damages.
- ✓ Wash your hands thoroughly with soap and water.

Have the following ready:

- ✓ A new pre-filled syringe
- ✓ Alcohol swabs
- ✓ Cotton ball or gauze
- ✓ Plaster
- ✓ Sharps disposal container



Step 1: Take an AMGEVITA® pre-filled syringe from its packaging



Lift the pre-filled syringe out of its packet approximately 15 to 30 minutes prior to injection so that it can reach room temperature. To do this, hold the pre-filled syringe by its barrel.

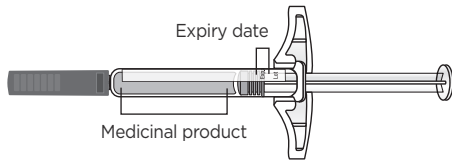
Place the original packaging with the unused syringes back in the refrigerator.

Never

- hold the pre-filled syringe by its plunger or protective needle cap.
- remove the protective needle cap before you are ready for the injection.
- remove the finger grip; it is part of the syringe.
- place the pre-filled syringe back in the refrigerator if it is already at room temperature.
- attempt to heat up the pre-filled syringe by using a source of heat, such as hot water or a microwave.
- expose the pre-filled syringe to direct sunlight.
- shake the pre-filled syringe.

Important: Always hold the pre-filled syringe by its barrel.

Step 2: Check the AMGEVITA® pre-filled syringe



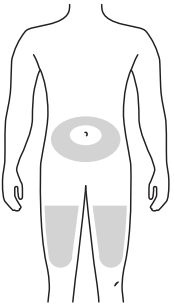
Make sure that the medicinal product in the syringe barrel is clear and colourless to slightly yellowish. Check the expiry date. Always hold the syringe by its barrel.

Never use the pre-filled syringe if

- the medicinal product is cloudy or discoloured or contains flakes or particles.
- parts appear to be cracked or broken.
- the protective needle cap is missing or is not securely attached.
- the expiry date printed on the label has been exceeded.

Use a new syringe in all cases.

Step 3: Prepare and clean the site of injection



Choose the site of injection:

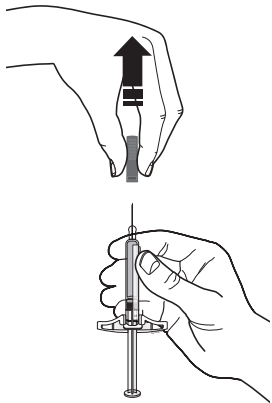
- Stomach (with the exception of an area of approx. 5 centimetres around the navel) or
- thigh

Disinfect the site of injection with an alcohol swab. As soon as the skin is dry, you are ready for the injection.

Important:

- Avoid touching the site of injection again prior to injection.
- Make sure that you do not use exactly the same site of injection that you used last time.
- Do not choose an area in which your skin is sensitive, damaged, red or hardened – avoid injecting in areas with scars or stretch marks.
- If you suffer from psoriasis, you should avoid injecting directly into raised, thick, red or flaky areas of skin or wounds.

Step 4: Remove the protective needle cap



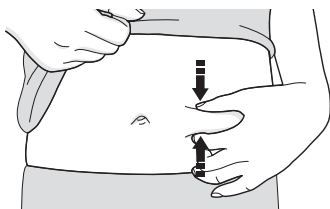
When you are ready for the injection, carefully pull the protective needle cap straight off and away from your body. It is normal to see a drop of the medicinal product on the needle tip.

Never

- turn or bend the protective needle cap.
- put the protective needle cap back on the pre-filled syringe.
- remove the protective needle cap from the pre-filled syringe before you are ready for the injection.

Important: Throw the protective needle cap away in the sharps disposal container provided for this.

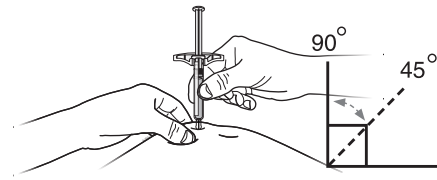
Step 5: Create a firm surface for the injection



Squeeze the skin between your thumb and fingers firmly so that you create a surface of approximately 5 centimetres in width.

Important: Keep the skin squeezed together during the injection.

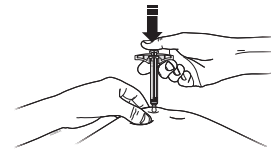
Step 6: Position the pre-filled syringe



Keep the skin squeezed together during the injection. Insert the needle in your skin at an angle of 45° to 90° after removing the protective needle cap.

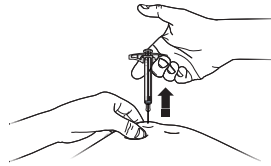
Important: Never place your fingers on the plunger while you are inserting the needle.

Step 7: Push the plunger down slowly



Use your thumb to slowly push the plunger down completely with even pressure as far as it will go.

Step 8: Carefully remove the syringe



Remove your thumb and carefully remove the syringe from your skin.

Step 9: After the injection



Immediately dispose of the used pre-filled syringe in a sharps disposal container after use. Do not throw the used pre-filled syringe and the sharps disposal container in the household waste and do not recycle them. Consult your doctor or pharmacist about their proper disposal.

Important: Do not reuse the used pre-filled syringe and do not reuse any medicinal product that remains in the used syringe. Always keep the sharps disposal container out of the sight and reach of children.

Step 10: Check the site of injection

If blood is visible at the site of injection, press down on the area for several seconds using a cotton ball or gauze. **Never** rub the site of injection. Attach a plaster or small dressing if necessary.

AMGEN
Care